

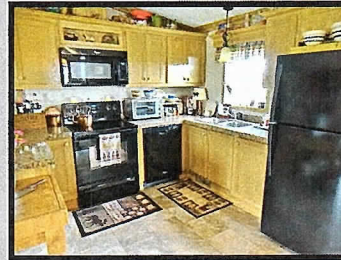
# FOR SALE



## 710 OHIO ST - HORACE, KS

This property includes a 2015 Springview 1,232 sq. ft. manufactured home with 3 bedrooms, and 2 baths. Home is "titled" and has not been purged with the real estate.

Sale includes refrigerator, stove, microwave, dishwasher, 18' x 21' carport and 10' x 16' Dersken shed.



AC/HEAT: Central

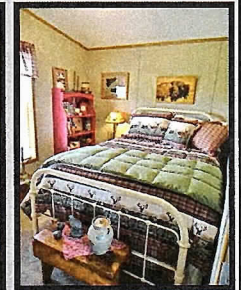
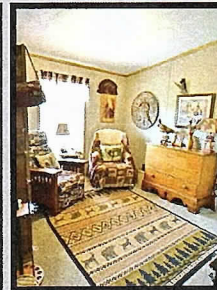
2015 RE: \$ 85.02, 2015 PP TAX: \$12

AVG ELECTRIC: \$150

**LEGAL DESCRIPTION:** Lots 1 thru 12, Block 135, Railroad Addition to the City of Horace, Greeley County, Kansas.

### PRICE REDUCED: \$127,000 TO \$125,500

\*The listing broker does not guarantee the information describing this property. Interested parties are encouraged to verify all information through personal inspection or with appropriate professionals.



## FARM & RANCH REALTY, INC.

**Kassie Weinland, Listing Agent (785-821-0852)**

1420 W. 4<sup>th</sup> • Colby, Kansas 67701

**Call Toll Free: 1-800-247-7863**

**DONALD L. HAZLETT, Broker**

For a virtual tour visit [www.farmandranchrealty.com](http://www.farmandranchrealty.com)

*"When you list with Farm & Ranch, it's as good as SOLD!"*

