

SUNFLOWER CERTIFIED SITE

TRIBUNE SITE UNIFIED GREELEY COUNTY

CERTIFIED SITE /ˈsər-tə-fid sīt / *noun* / A parcel of land meeting a specific set of requirements and criteria to demonstrate the property is ready for investment and/or business development opportunities; to include detailed background information such as price and availability, utilities, site access, environmental records, and potential site development costs.

GREELEY COUNTY, KS


Population | 1,284

Average age
 **42.2**

Average Household
Income

\$66k 

On average, workers
commute

 **9 MINUTES**
to work

24.8

Available acres

\$125k

\$5k/acre

This 24-acre tract of land, owned by the Unified Greeley County Municipal Services District, is conveniently located adjacent to the city of Tribune, less than a mile east of highway K27, and immediately north of K96. Adjoining a rail line, a highway, and near the municipal airport, the property provides an excellent opportunity for development and is readily available to industrial companies seeking relocation or expansion.



NATURAL GAS
3" 60 PSI
93.5 MCF capacity



FIBER
and copper
access



TRANSPORTATION

- Highways K27 and K96
- 60 miles to Interstate 70
- 4 miles to Tribune Airport
- Rail service is accessible



WATER
6" water line
50 PSI



ELECTRIC
7,500 kVA
capacity

LOIS **PROPERTY LISTING** <https://bit.ly/37s5Vu8>

SITE OWNER
Unified Greeley
County Municipal
Services District

CONTACT
John Kennedy
Greeley County
Community Development



620.376.2548

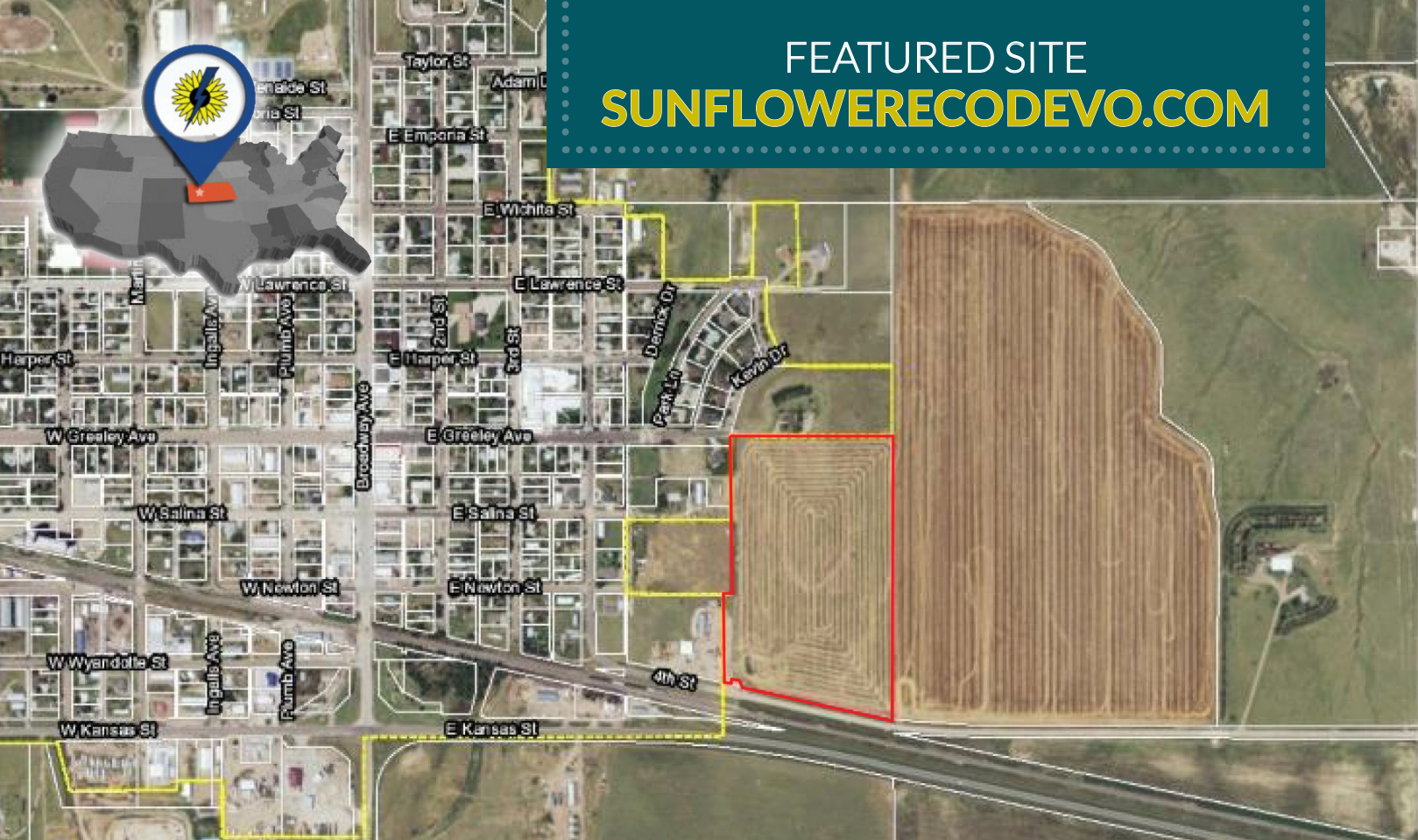


GCCDKS@GMAIL.COM



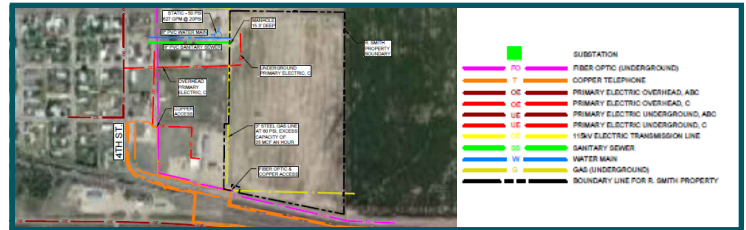
GREELEYCOUNTY.ORG

FEATURED SITE SUNFLOWERCODEVO.COM



5 REASONS TO CHOOSE TRIBUNE AND GREELEY COUNTY

1. Greeley County is growing! It's tax base grew from \$26.8 to \$35.9 million from 2012-2020.
2. The economy is agriculturally-based with cattle, dairy and hog operations in addition to wheat, corn, and milo crops.
3. A civilian labor force of 10,230 people is located within a 50-mile radius of Tribune.
4. Four technical and community colleges located within 90 miles for employee training and growth.
5. Greeley County is a federally-designated Opportunity Zone, allowing investors to reap substantial capital gains benefits when investing in Greeley County. Other attractive incentives and development tools are available. The county is proactive in seeking additional development tools to grow and diversify its economy and engaging with potential businesses, industrial facilities and value-added agriculture opportunities.



LARGEST EMPLOYERS IN GREELEY COUNTY

COMPANY	PRODUCT/SERVICE	EMPLOYEES
Greeley County Health Services	Medical	133
Unified Greeley County	Government	85
USD 200	Education	77
J7 Dairy	Agriculture	30
Celtic Dairy	Agriculture	24

The Sunflower Certified Sites Program is a facet Sunflower Electric Economic Development, which is a collective initiative of Sunflower and its seven member utilities, who continue to take pride in being pioneers, in seeing the potential in their communities and businesses, in trying new ways of doing things, and growing the vibrant economy of central and western Kansas.

SUNFLOWER ELECTRIC
ECONOMIC DEVELOPMENT
energy to grow

